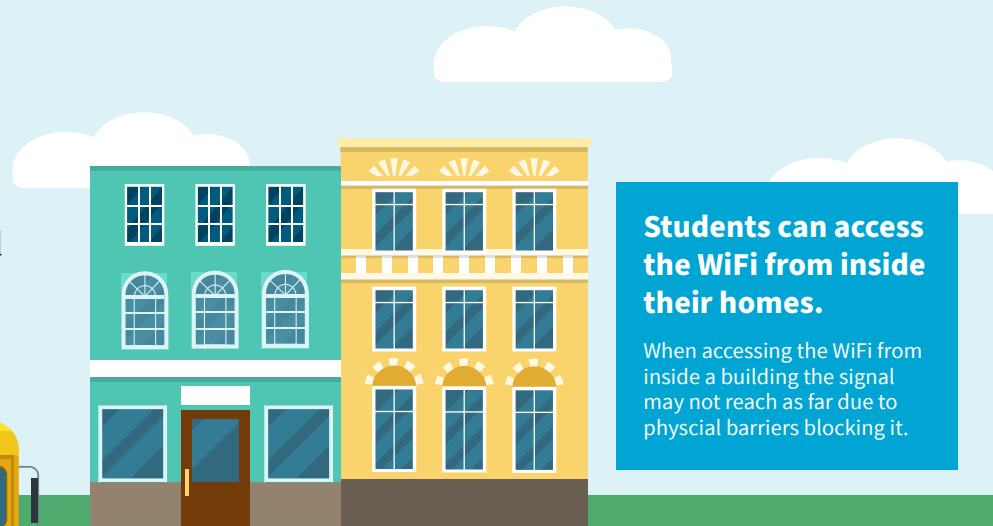


Create a Community WiFi Hotspot With a School Bus

Amid distance learning, students without internet at home can quickly fall behind. In order to provide essential Internet access to students, district leaders are deploying WiFi-equipped buses into their communities.



Students can access the WiFi from inside their homes.

When accessing the WiFi from inside a building the signal may not reach as far due to physical barriers blocking it.

Students can access the WiFi 150 to 300 feet from the bus.

Mark off areas that are at least six feet apart to ensure students are following social distancing guidelines.

Students can sit on nearby benches or at tables.

Ideally, school staff will be available to answer any questions during the first few days of use.

Students can sit in a parked car near the bus to access the WiFi.



WHERE CAN THE BUSES BE PARKED?

- District Meal Pick-Up Locations
- School or Church Parking Lots
- Neighborhoods
- Mobile Home Parks
- Apartment Complexes

HOW IS THE WIFI ROUTER POWERED?

Hard installed routers are powered by the bus battery. Solar panels can also be installed to power the routers. With Kajeet SmartBus™, the router can still operate after the ignition has been turned off by setting the delayed/auto-off feature by up to 18 hours.

HOW FAR DOES THE WIFI REACH?

With Kajeet SmartBus™, the signal reaches 150 to 300 feet from the router, allowing students to practice social distancing while accessing the Internet.

